



Red House Dearham Bridge Road Crosby, Crosby CA15 6RW

House - Detached



4



3



2



69



GRISDALES
PROPERTY SERVICES

£485,000

Key Highlights

- Beautifully maintained 1950's home full of charm, space, and natural light
- Flowing layout connecting lounge, dining room, and conservatory with direct garden access
- Ground floor includes a shower room and internal garage access
- Extensive outdoor space with sweeping driveway, ample parking, two garages, and outbuildings
- Perfect gardens for Growing Your Own, keeping chickens etc.
- Welcoming hallway with original front door leading to a cosy lounge with bay window and fireplace
- Characterful kitchen with garden views, Rayburn, two pantries, and space for dining
- Four spacious double bedrooms upstairs, Upstairs, you'll find four generous double bedrooms, each benefiting from built-in wardrobes. including a large principal with en-suite, plus family bathroom & wash basin & shower in bed 2
- Set in just under an acre with landscaped gardens, patio, lawn, and a picturesque orchard/woodland area with seasonal flowers

GRISDALES.CO.UK

Red House Dearham Bridge Road, Crosby





Welcome to Dearham Bridge Road, Crosby, Maryport

A captivating and beautifully maintained 1950's home, this charming property offers light-filled, generously proportioned living spaces that flow seamlessly from a welcoming hallway through to a cosy lounge, dining room, and garden-facing conservatory—perfect for both everyday living and entertaining. The characterful kitchen, complete with a Rayburn and lovely garden views, adds warmth and charm, while upstairs four spacious double bedrooms, including an impressive principal, provide comfort and flexibility. Set within just under an acre, the grounds are simply enchanting, featuring a sweeping driveway, garages, and stunning gardens that unfold into a peaceful orchard and woodland— it's also a perfect place for "lifestyle living" - ample space for growing veg, keeping chickens etc.

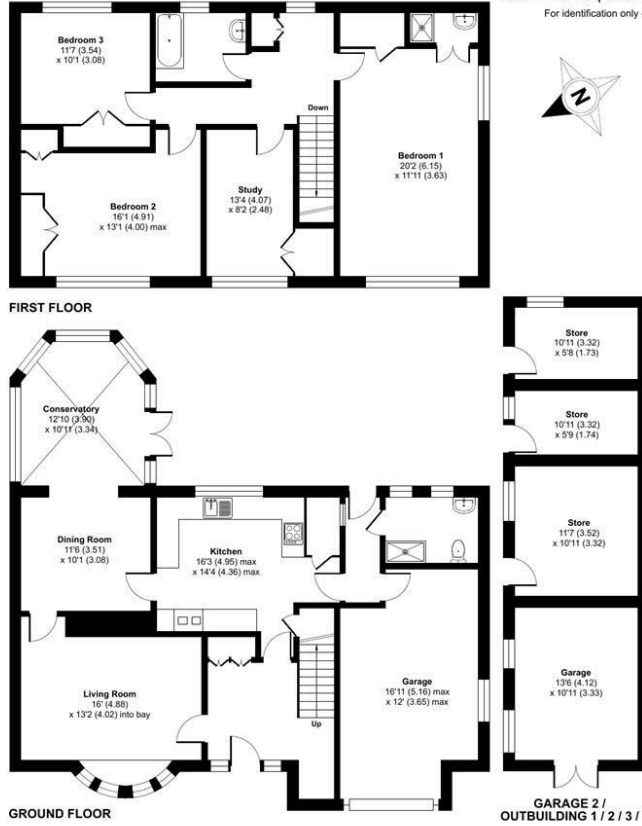
Red House Dearham Bridge Road, Crosby

Floorplan

Red House, Dearham Bridge Road, Crosby, Maryport, CA15

Approximate Area = 1847 sq ft / 171.5 sq m
Garage = 373 sq ft / 34.6 sq m
Outbuildings = 257 sq ft / 23.8 sq m
Total = 2477 sq ft / 229.9 sq m

For identification only - Not to scale



Floor plan produced in accordance with RICS Property Measurement 2nd Edition, incorporating International Property Measurement Standards (IPMS2 Residential). © nichcom 2026. Produced for Gridsdates. REF: 1465851

Total Floor Area:
sq ft

OWNERS COMMENTS

In the owners words "Red House and garden has given three generations of the family so much pleasure. The house itself is full of light with loads of storage space. The garden is like a number of outside rooms with hidden places the grandchildren in particular enjoyed as they grew up. We've enjoyed weddings, anniversaries, christenings, birthdays and family parties in the garden. Spring the garden is full of bulbs and Autumn full of fruit. It's been a joy for the family to live and enjoy our time here."

THINGS YOU NEED TO KNOW

The property is Freehold and benefits from mains gas, electric, water and drainage services.

A HOMELY HOME!

Wow – we absolutely adore this gorgeous home, and a home it most certainly is! Dating back to the 1950's and beautifully maintained over the years, it radiates charm, comfort and a wonderful sense of space and light throughout.

The welcoming open hallway, complete with the original front door, sets the tone perfectly, and leads into a cosy front-facing lounge with an attractive fireplace and bay window. From here, the layout flows effortlessly into the dining room and on into the conservatory, creating a seamless connection straight out to the garden – ideal for both everyday living and entertaining. The kitchen is a delight, practical yet full of character, featuring a large picture window framing lovely garden views, a comforting Rayburn, two pantries, and space for a table. Completing the ground floor is a convenient shower room and internal access to the garage. Upstairs, you'll find four generous double bedrooms, each benefiting from built-in wardrobes. with a particularly spacious principal room offering a small en-suite area, alongside a well-appointed family bathroom – altogether a truly warm, inviting, and much-loved home.

THE OUTSIDE IS AS IMPORTANT AS THE INSIDE!

And outside is equally as impressive – a true continuation of everything this wonderful home has to offer! A long driveway sweeps you in, arriving at a generous parking and turning area, complete with two garages and three useful outbuildings tucked beyond. The front garden is simply idyllic, with a charming pond, neatly kept lawns, and a beautiful array of mature shrubs, trees, and flowering plants that burst into colour at this time of year. To the rear, the conservatory opens out onto a patio, creating the perfect spot for outdoor dining and relaxation, before giving way to a generous lawn that gently blends into a more natural orchard and woodland area and with bags of potential for creating a new lifestyle for you - ample space for growing veg, keeping chickens etc. Here, in spring, you'll find bluebells and daffodils in abundance, adding a truly magical, seasonal touch.

Altogether, the property sits within just under an acre of land, offering space, privacy, and a wonderfully tranquil setting to enjoy.

DIRECTIONS

W3W://violinist.cashier.whirlpool

THE LOCAL COMMUNITY

Crosby is a highly sought after village located conveniently for Cockermouth, the Northern Lake District as well as the coast. There's much going on in and around the immediate area, with a great community spirit in the village itself along with a pub, a play park, the village primary school (Crosscanonby St John's) and good access to Dearham primary school along with secondary schools including those at Cockermouth, Keswick and Maryport. Cockermouth tends to be the local town of choice within the area, where there's a great array of independent shops and cafes along with Sainsburys and other supermarkets and convenience stores as well as with health and leisure facilities, entertainment etc. The Cumbrian Coast line is easy to access from Maryport and the road network is north/south and east/west linking the area perfectly. All in all an excellent village of choice for the discerning buyer.



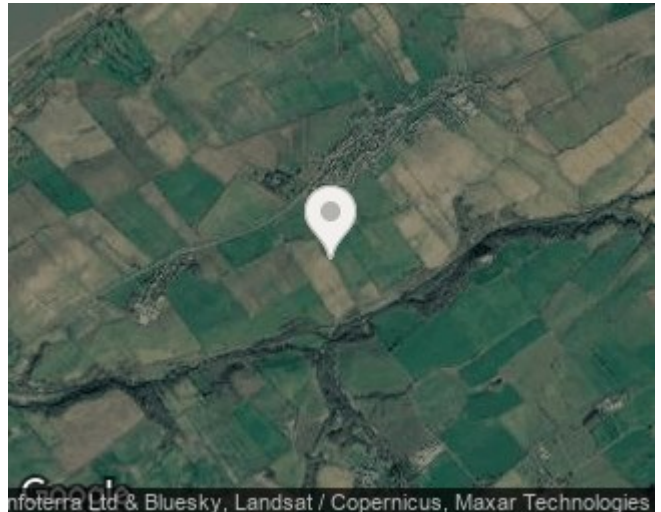








Location



Energy Performance

Energy Efficiency Rating		Current	Potential
Very energy efficient - lower running costs			
(92 plus) A			
(81-91) B			
(69-80) C			
(55-68) D			
(39-54) E			
(21-38) F			
(1-20) G			
Not energy efficient - higher running costs			
		69	74
England & Wales	EU Directive 2002/91/EC		

Environmental Impact (CO ₂) Rating		Current	Potential
Very environmentally friendly - lower CO ₂ emissions			
(92 plus) A			
(81-91) B			
(69-80) C			
(55-68) D			
(39-54) E			
(21-38) F			
(1-20) G			
Not environmentally friendly - higher CO ₂ emissions			
England & Wales	EU Directive 2002/91/EC		

Additional Information

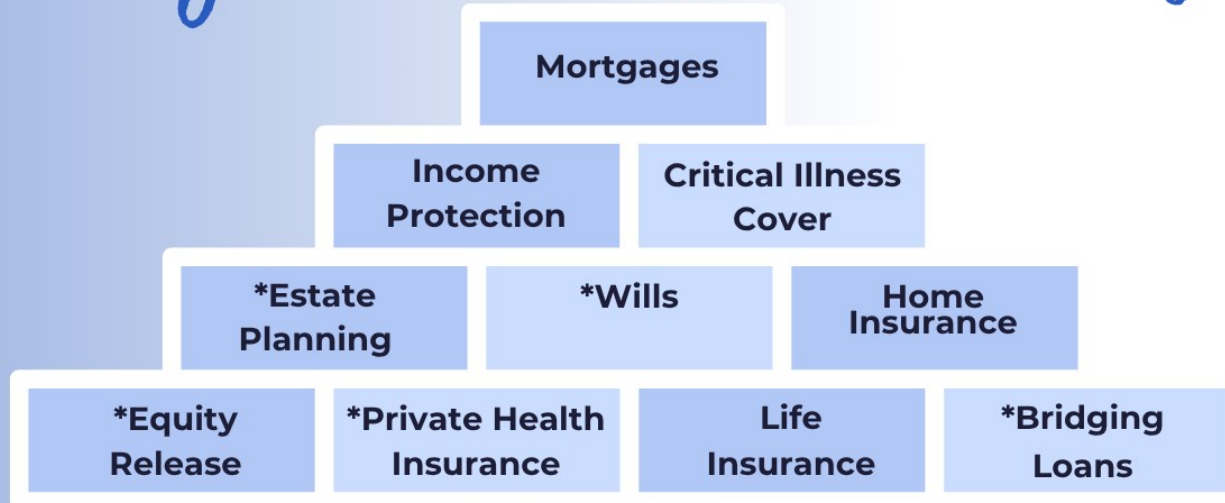
Tenure: Freehold Council: Cumberland Tax Band: E

Please Note:

These particulars, whilst believed to be accurate are set out as a general outline only for guidance and do not constitute any part of an offer or contract. Intending purchasers should not rely on them as statements of representation of fact, but must satisfy themselves by inspection or otherwise as to their accuracy. No person in this firms employment has the authority to make or give any representation or warranty in respect of the property.



All your needs under one roof



*Advice in these areas will be referred to a specialist

Meet the team

 **01900 829977**

 **01946 693931**

 **cockermouth@grisdales.co.uk**

 **whitehaven@grisdales.co.uk**

-Cockermouth

-Whitehaven



The advice will be given by the right retirement plan limited

The Right Advice Cumbria (Bulman & Pollard) is a trading style of The Right Retirement Plan Limited which is an appointed representative of The Right Mortgage Limited, which is authorised and regulated by the Financial Conduct Authority. Head Office: St Johns Court, 70 St Johns Close, Knowle, Solihull, B93 0NH. Registered in England & Wales no. 13502665

Contact Us

Cockermouth Branch
A: 18 South Street, Cockermouth,
Cumbria, CA13 9RT
T: 01900 829 977
E: cockermouth@grisdales.co.uk

Just viewed this home?

Tell us how we did. Scan the QR
code to leave your review.

